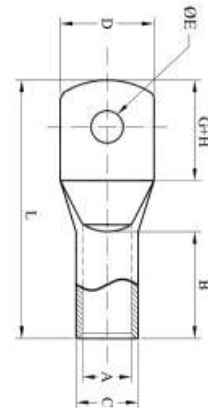


Copper Cable Lugs Standard

Type ACUSI

Material : E-Copper
 Finish : Electro Tinned
 Features : With inspection hole (Also available without inspection hole)

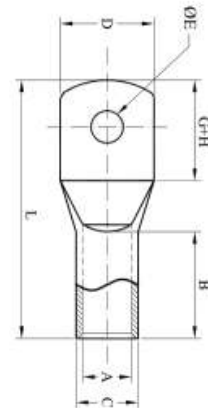


| CABLE mm ² | ØE | PART No. | DIMENSIONS IN mm | | | | | | | |
|--------------------------|------|-------------|------------------|-----|----|-----|----|----|----|----|
| | | | A | C | D | G+H | B | L | | |
| 1.5 | 4.2 | ACUSI1.5M04 | 1.8 | 3.7 | 8 | 9 | 5 | 16 | | |
| | 5.2 | ACUSI1.5M05 | | | | 10 | | 11 | 18 | |
| | 6.2 | ACUSI1.5M06 | | | | | | | | |
| 2.5 | 4.2 | ACUSI2.5M04 | 2.4 | 4 | 9 | 9 | 7 | 18 | | |
| | 5.2 | ACUSI2.5M05 | | | | 10 | | 12 | 20 | |
| | 6.2 | ACUSI2.5M06 | | | | | | | | |
| | 8.2 | ACUSI2.5M08 | | | | | 15 | | 24 | |
| 4 | 5.2 | ACUSI4M05 | 3.1 | 4.8 | 10 | 11 | 7 | 21 | | |
| | 6.2 | ACUSI4M06 | | | | 12 | | 15 | 25 | |
| | 8.2 | ACUSI4M08 | | | | | | | | |
| 6 | 4.2 | ACUSI6M04 | 3.8 | 5.5 | 11 | 11 | 12 | 26 | | |
| | 5.2 | ACUSI6M05 | | | | 12 | | 15 | 30 | |
| | 6.2 | ACUSI6M06 | | | | | | | | |
| | 8.2 | ACUSI6M08 | | | | | | | | |
| | 10.5 | ACUSI6M10 | | | | | 14 | 19 | 16 | 39 |
| 10 | 5.2 | ACUSI10M05 | 4.4 | 6.2 | 11 | 13 | 11 | 27 | | |
| | 6.2 | ACUSI10M06 | | | | 12 | | 16 | 30 | |
| | 8.2 | ACUSI10M08 | | | | | | | | |
| | 10.5 | ACUSI10M10 | | | | | 17 | 21 | | 35 |
| | 13 | ACUSI10M12 | 4.7 | 7.1 | | | | | | |
| 16 | 5.2 | ACUSI16M05 | 5.3 | 7.1 | 11 | 15 | 14 | 32 | | |
| | 6.2 | ACUSI16M06 | | | | | | | | |
| | 8.2 | ACUSI16M08 | | | | | | | | |
| | 10.5 | ACUSI16M10 | | | | | 14 | 22 | 11 | 36 |
| | 13 | ACUSI16M12 | | | | | 18 | | | |
| 20 | 8.2 | ACUSI20M08 | 6.1 | 7.7 | 12 | 14 | 12 | 30 | | |
| 25 | 5.2 | ACUSI25M05 | 7.0 | 9.0 | 13 | 15 | 12 | 32 | | |
| | 6.2 | ACUSI25M06 | | | | | | | | |
| | 8.2 | ACUSI25M08 | | | | | | | | |
| | 10.5 | ACUSI25M10 | | | | | 16 | 22 | | 38 |
| | 13 | ACUSI25M12 | | | | | | | | |

Copper Cable Lugs Standard

Type ACUSI

Material : E-Copper
 Finish : Electro Tinned
 Features : With inspection hole (Also available without inspection hole)

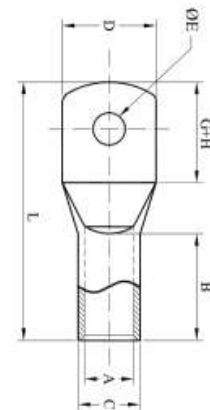


| CABLE mm ² | ØE | PART No. | DIMENSIONS IN mm | | | | | |
|--------------------------|------|-------------|------------------|------|----|-----|----|----|
| | | | A | C | D | G+H | B | L |
| 35 | 5.2 | ACUSI35M05 | 8.0 | 10.0 | 15 | 20 | 13 | 38 |
| | 6.2 | ACUSI35M06 | | | | | | |
| | 8.2 | ACUSI35M08 | | | | | | |
| | 10.5 | ACUSI35M10 | | | 17 | 33 | 41 | |
| | 13 | ACUSI35M12 | | | 22 | | | |
| | 17 | ACUSI35M16 | | | 52 | | | |
| 50 | 6.2 | ACUSI50M06 | 9.2 | 11.2 | 18 | 20 | 17 | 42 |
| | 8.2 | ACUSI50M08 | | | | | | |
| | 10.5 | ACUSI50M10 | | | | | | |
| | 13 | ACUSI50M12 | | | | | | |
| 70 | 8.2 | ACUSI70M08 | 11.6 | 13.8 | 21 | 23 | 18 | 46 |
| | 10.5 | ACUSI70M10 | | | | | | |
| | 13 | ACUSI70M12 | | | | | | |
| | 14.7 | ACUSI70M14 | | | 24 | 27 | | |
| | 17 | ACUSI70M16 | | | | | | |
| 95 | 10.5 | ACUSI95M10 | 12.8 | 15.6 | 23 | 28 | 20 | 55 |
| | 13 | ACUSI95M12 | | | | | | |
| | 14.7 | ACUSI95M14 | | | | 30 | 60 | |
| | 17 | ACUSI95M16 | | | | | | |
| 120 | 8.2 | ACUSI120M08 | 14.8 | 17.8 | 26 | 27 | 26 | 60 |
| | 10.5 | ACUSI120M10 | | | | | | |
| | 13 | ACUSI120M12 | | | | | | |
| | 14.7 | ACUSI120M14 | | | | | | |
| | 17 | ACUSI120M16 | | | 33 | 65 | | |
| 150 | 8.2 | ACUSI150M08 | 16 | 19.6 | 28 | 35 | 26 | 70 |
| | 10.5 | ACUSI150M10 | | | | | | |
| | 13 | ACUSI150M12 | | | | | | |
| | 14.7 | ACUSI150M14 | | | | | | |
| | 17 | ACUSI150M16 | | | | | | |
| 185 | 10.5 | ACUSI185M10 | 18 | 22 | 32 | 40 | 32 | 82 |
| | 13 | ACUSI185M12 | | | | | | |
| | 14.7 | ACUSI185M14 | | | | | | |
| | 17 | ACUSI185M16 | | | | | | |

Copper Cable Lugs Standard

Type ACUSI

Material : E-Copper
 Finish : Electro Tinned
 Features : With inspection hole (Also available without inspection hole)



| CABLE mm ² | ØE | PART No. | DIMENSIONS IN mm | | | | | |
|--------------------------|-------|--------------|------------------|------|----|-----|----|-----|
| | | | A | C | D | G+H | B | L |
| 240 | 10.5 | ACUSI240M10 | 22 | 26 | 38 | 40 | 38 | 92 |
| | 13 | ACUSI240M12 | | | | | | |
| | 14.7 | ACUSI240M14 | | | | | | |
| | 17 | ACUSI240M16 | | | | | | |
| | 21 | ACUSI240M20 | | | | | | |
| 300 | 10.5 | ACUSI300M10 | 24 | 28.7 | 42 | 45 | 41 | 101 |
| | 13 | ACUSI300M12 | | | | | | |
| | 14.7 | ACUSI300M14 | | | | | | |
| | 17 | ACUSI300M16 | | | | | | |
| | 21 | ACUSI300M20 | | | | | | |
| | BLANK | ACUSI300MBL | | | | | | |
| 400 | 17 | ACUSI400M16 | 28.0 | 33.2 | 49 | 50 | 48 | 113 |
| | 21 | ACUSI400M20 | | | | | | |
| | BLANK | ACUSI400MBL | | | | | | |
| 500 | 17 | ACUSI500M16 | 30.0 | 36.0 | 56 | 48 | 54 | 120 |
| | 21 | ACUSI500M20 | | | | | | |
| | BLANK | ACUSI500MBL | | | | | | |
| 630 | 17 | ACUSI630M16 | 35 | 42 | 61 | 58 | 56 | 137 |
| | 21 | ACUSI630M20 | | | | | | |
| | 27 | ACUSI630M25 | | | | | | |
| | BLANK | ACUSI630MBL | | | | | | |
| 800 | 17 | ACUSI800M16 | 39 | 46.3 | 67 | 65 | 75 | 165 |
| | 21 | ACUSI800M20 | | | | | | |
| | BLANK | ACUSI800MBL | | | | | | |
| 1000 | 17 | ACUSI1000M16 | 43 | 53.8 | 76 | 80 | 90 | 200 |
| | 21 | ACUSI1000M20 | | | | | | |
| | 27 | ACUSI1000M25 | | | | | | |
| | BLANK | ACUSI1000MBL | | | | | | |