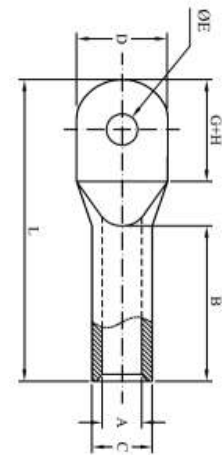


# Copper Cable Lugs DIN Standard

## Type ACUSDT

Material : E-Copper  
 Finish : Electro Tinned  
 Features : With inspection hole (Also available without inspection hole)  
 Type Tested as per IEC 61238



CABLE mm <sup>2</sup>	ØE	PART No.	DIMENSIONS IN mm						
			A	C	D	G+H	B	L	
10	6.4	ACUSDT10M06	4.5	7	9	16	10	35	
	8.4	ACUSDT10M08			13	20		37	
16	6.4	ACUSDT16M06	5.5	8.5	13	15.5	20	44	
	8.4	ACUSDT16M08				20		46	
25	6.4	ACUSDT25M06	7	10	14	15.5	20	46	
	8.4	ACUSDT25M08			16	20		48	
35	8.4	ACUSDT35M08	8.2	12.5	17	20	20	54	
	10.5	ACUSDT35M10			19	24			
	13	ACUSDT35M12			21	26			
50	8.4	ACUSDT50M08	10	14.5	20	20	28	64	
	10.5	ACUSDT50M10			22	24			
	13	ACUSDT50M12			24	26			
70	8.4	ACUSDT70M08	11.5	16.5	24	20	28	67	
	10.5	ACUSDT70M10				24			24
	13	ACUSDT70M12				26			26
95	10.5	ACUSDT95M10	13.5	19	28	24	35	78	
	13	ACUSDT95M12				26			26
120	10.5	ACUSDT120M10	15.5	21	32	31	35	86	
	13	ACUSDT120M12				33			33
	17	ACUSDT120M16				39			39
150	10.5	ACUSDT150M10	17	23.5	34	31	35	94	
	13	ACUSDT150M12				33		33	
	17	ACUSDT150M16				39		39	97
185	10.5	ACUSDT185M10	19	25.5	37	31	40	98	
	13	ACUSDT185M12				33		33	
	17	ACUSDT185M16				39		39	101
240	13	ACUSDT240M12	21.5	29	42	33	40	108	
	17	ACUSDT240M16				39		39	111
	21	ACUSDT240M20				43		43	113

# Copper Cable Lugs DIN Standard

## Type ACUSDT

Material : E-Copper  
 Finish : Electro Tinned  
 Features : With inspection hole (Also available without inspection hole)  
 Type Tested as per IEC 61238



CABLE mm <sup>2</sup>	ØE	PART No.	DIMENSIONS IN mm					
			A	C	D	G+H	B	L
300	17	ACUSDT300M16	24.5	31.0	48	40	50	122
	21	ACUSDT300M20						
400	17	ACUSDT400M16	27.5	38.5	54	50	70	140
	21	ACUSDT400M20						
500	17	ACUSDT500M16	31.0	42.0	60	50	70	150
	21	ACUSDT500M20						
630	17	ACUSDT630M16	34	44	62	50	80	160
	21	ACUSDT630M20						
800	21	ACUSDT800M20	40	52	75	60	100	195
	27	ACUSDT800M25						
1000	21	ACUSDT1000M20	44	58	85	60	100	195
	27	ACUSDT1000M25						

