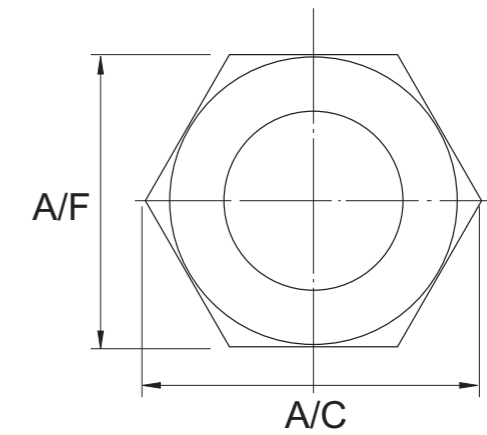
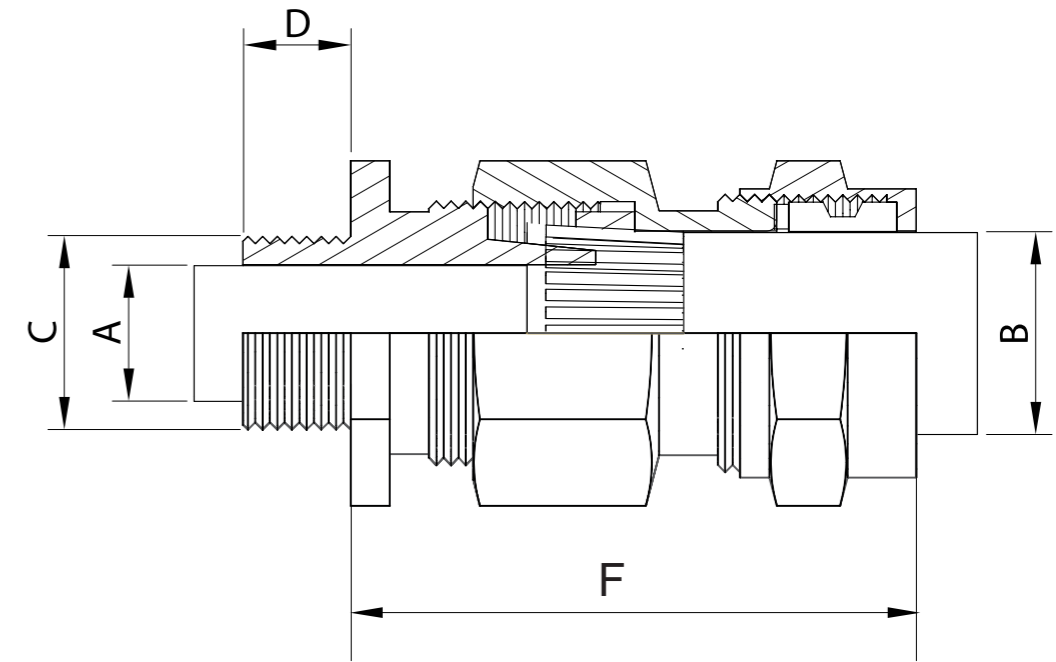



SIZE	CABLE DIA		ISO ENTRY THREAD		PROTRU SION LENGTH APPROX F	HEXAGONAL SIZE		P/N
	A	B	DIA	LENGTH		A/F	A/C	
	MAX	MAX	C	D				
16S	8.0	11	M16	10	40	20	22	ACW-16S
16	9	13	M16	10	40	20	22	ACW-16
20S	12.5	15	M20	10	42	22	24	ACW-20S
20	14.3	19	M20	10	42	25	27	ACW-20
25S	18.4	23.6	M25	10	44	31	34	ACW-25S
25	20.7	27	M25	10	44	33.5	37	ACW-25
32S	26.5	31	M32	10	46	35	38.5	ACW-32S
32	27	32.5	M32	10	46	40	45	ACW-32
40S	31.7	37	M40	13.5	50	44.5	49	ACW-40S
40	33.25	39	M40	13.5	50	48.5	54	ACW-40
50S	39	46	M50	14	57	56.5	63.5	ACW-50S
50	44	50	M50	14	57	61	68	ACW-50
63S	50	59	M63	14	70	69.5	77	ACW-63S
63	56	62	M63	14	61	75.5	84.5	ACW-63
75S	62.7	71	M75	15	65	83.5	93	ACW-75S
75	67.9	77.5	M75	15	66	89.5	99	ACW-75
90S	76	84	M90	20	80	100	110	ACW-90S
90	78	89	M90	20	82	102	115	ACW-90



Material: Brass  
 Finish: Natural  
 All dimensions mentioned are in mm. Standard tolerance applicable

Title: CW INDUSTRIAL BRASS GLAND	SHEET 1/1	SCALE Not to Scale
Drawing No: ACW/01/19		
DRAWN 01/01/2019		
CHECK		
APPR. NJG		
ISSUED		
REV		
CUSTOMER		