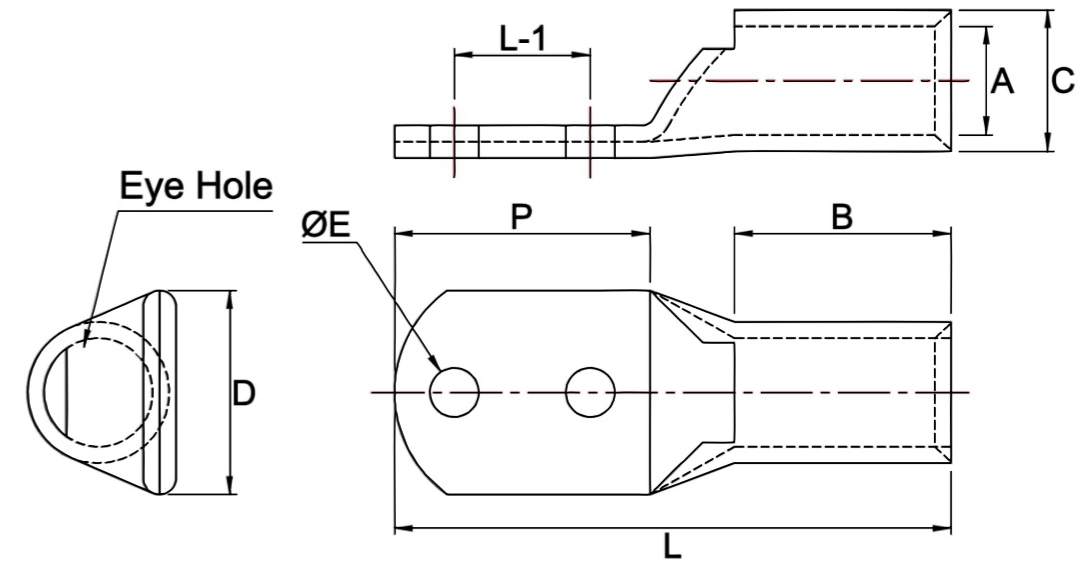
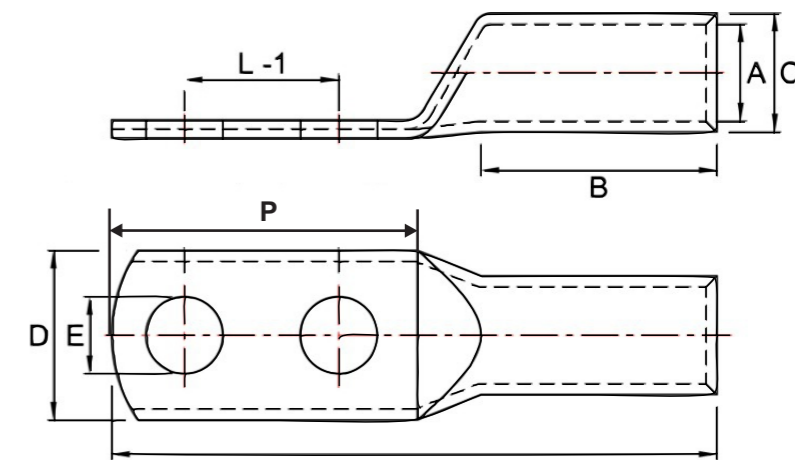


Size mm ²	E ± 0.3	A ± 0.3	C ± 0.3	D ± 1	B ± 1	P ± 1	L-1 ±	L ± 1	P/N
16	10.5	5.5	7.8	20	20	71.5	44.5	93.5	ACUS2H 16-10(H-H 44.5)
16	13	5.5	7.8	20	20	76.5	44.5	98.5	ACUS2H 16-12 (H-H 44.5)
25	10.5	7	9.5	21	20	71.5	44.5	94.5	ACUS2H 25-10 (H-H 44.5)
25	13	7	9.5	21	20	76.5	44.5	99.5	ACUS2H 25-12 (H-H 44.5)
35	10.5	8.2	10.7	21	20	71.5	44.5	95.5	ACUS2H 35-10 (H-H 44.5)
35	13	8.2	10.7	21	20	76.5	44.5	100.5	ACUS2H 35-12 (H-H 44.5)
50	10.5	10	13.1	21	28	71.5	44.5	103.5	ACUS2H 50-10 (H-H 44.5)
50	13	10	13.1	21	28	76.5	44.5	108.5	ACUS2H 50-12 (H-H 44.5)
70	10.5	11.5	15	22	28	71.5	44.5	105.5	ACUS2H 70-10 (H-H 44.5)
70	13	11.5	15	22	28	76.5	44.5	110.5	ACUS2H 70-12 (H-H 44.5)
95	10.5	13.5	17.5	25	35	71.5	44.5	113.5	ACUS2H 95-10 (H-H 44.5)
95	13	13.5	17.5	25	35	76.5	44.5	118.5	ACUS2H 95-12 (H-H 44.5)
120	13	15.5	19.9	28.5	35	76.5	44.5	119.5	ACUS2H 120-12 (H-H 44.5)
120	17	15.5	19.9	28.5	35	84.5	44.5	127.5	ACUS2H 120-16 (H-H 44.5)
150	13	17	21.5	31.5	35	76.5	44.5	120.5	ACUS2H 150-12 (H-H 44.5)
150	17	17	21.5	31.5	35	84.5	44.5	128.5	ACUS2H 150-16 (H-H 44.5)
185	13	19	24	35.5	40	76.5	44.5	125.5	ACUS2H 185-12 (H-H 44.5)
185	17	19	24	35.5	40	84.5	44.5	133.5	ACUS2H 185-16 (H-H 44.5)
240	13	21.5	26.5	39	40	76.5	44.5	128.5	ACUS2H 240-12(H-H 44.5)
240	17	21.5	26.5	39	40	84.5	44.5	136.5	ACUS2H 240-16 (H-H 44.5)


LUG WITH INSPECTION HOLE



LUG WITHOUT INSPECTION HOLE

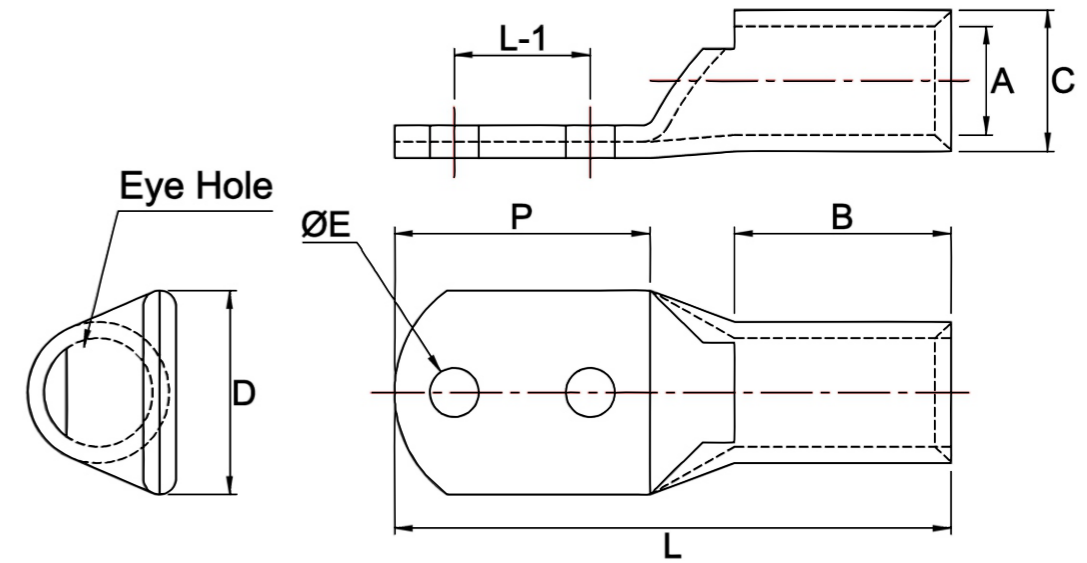


- Notes:
- All dimensions are in mm
 - Material E-Copper Grade 99.9%
 - Lugs shall have marking as per respective size
 - Surface Finish: Electro Tinned Plated
 - Plating Thickness: 6 microns
 - Available with or without inspection hole.

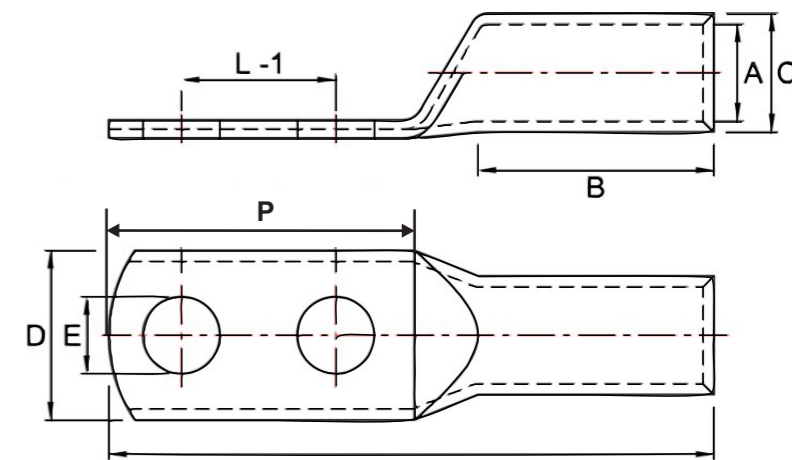
Title: ACUS2H (H-H 44.5) CU CABLE LUGS	SHEET 1/2	SCALE Not to Scale
Drawing No: ACUS2H (H-H 44.5)I/01/19		
DRAWN 01/01/2019		
CHECK JV		
APPR. NJG		
ISSUED		
REV		
CUSTOMER		

Size mm ²	E ± 0.3	A ± 0.3	C ± 0.3	D ± 1	B ± 1	P ± 1	L-1 ±	L ± 1	P/N
300	13	24.5	31	44	50	76.5	44.5	140.5	ACUS2H 300-12 (H-H 44.5)
300	17	24.5	31	44	50	84.5	44.5	148.5	ACUS2H 300-16 (H-H 44.5)
400	13	27.5	34.5	51	70	76.5	44.5	162.5	ACUS2H 400-12 (H-H 44.5)
400	17	27.5	34.5	51	70	84.5	44.5	170.5	ACUS2H 400-16 (H-H 44.5)
500	13	31	38	56.5	70	76.5	44.5	162.5	ACUS2H 500-12 (H-H 44.5)
500	17	31	38	56.5	70	84.5	44.5	170.5	ACUS2H 500-16 (H-H 44.5)
630	13	34.5	44	61.6	80	76.5	44.5	172.5	ACUS2H 630-12 (H-H 44.5)
630	17	34.5	44	61.6	80	84.5	44.5	180.5	ACUS2H 630-16 (H-H 44.5)
800	13	40	52	72	100	76.5	44.5	196.5	ACUS2H 800-12 (H-H 44.5)
800	17	40	52	72	100	84.5	44.5	204.5	ACUS2H 800-16 (H-H 44.5)
1000	13	44	58	80	118	76.5	44.5	219.5	ACUS2H 1000-12 (H-H 44.5)
1000	17	44	58	80	118	84.5	44.5	227.5	ACUS2H 1000-16 (H-H 44.5)


LUG WITH INSPECTION HOLE



LUG WITHOUT INSPECTION HOLE



- Notes:
- All dimensions are in mm
 - Material E-Copper Grade 99.9%
 - Lugs shall have marking as per respective size
 - Surface Finish: Electro Tinned Plated
 - Plating Thickness: 6 microns
 - Available with or without inspection hole.

Title: ACUS2H (H-H 44.5) CU CABLE LUGS	SHEET 2/2	SCALE Not to Scale
Drawing No: ACUS2H (H-H 44.5)I/01/19		
DRAWN 01/01/2019		
CHECK JV		
APPR. NJG		
ISSUED		
REV		
CUSTOMER		