

1 2 3 4 5 6 7 8

A

A

Size mm <sup>2</sup>	ØD ± 0.2	Ød ± 0.2	L1 ± 1	A ± 0.2	ØE ± 0.2	F ± 0.5	ØG ± 0.2	L ± 2	L2 ± 1	P/N
16	16	5.8	42	3.3	10.5	20	11	81	21	ABML 16-10
25	16	6.7	42	3.3	10.5	20	11	81	21	ABML 25-10
25	16	6.7	42	3.3	12.7	20	11	81	21	ABML 25-12
35	16	8.2	42	3.3	10.5	20	11	81	21	ABML 35-10
35	16	8.2	42	3.3	12.7	20	11	81	21	ABML 35-12
50	20	9.2	43	4	10.5	24	14	90	25	ABML 50-10
50	20	9.2	43	4	12.7	24	14	90	25	ABML 50-12
70	20	11.2	43	4	12.7	24	14	90	25	ABML 70-12
95	20	12.7	43	4	12.7	24	14	90	25	ABML 95-12
120	25	13.9	60	6	12.7	30	18.8	116	31	ABML 120-12
150	25	15.7	60	6	12.7	30	18.8	116	31	ABML 150-12
185	32	17.5	60	7	12.7	35	23.8	125	35	ABML 185-12
240	32	19.7	60	7	12.7	35	23.8	125	35	ABML 240-12
300	34	23.5	62	7.5	12.7	36	26.8	125	36	ABML 300-12
400	34	26.5	62	7.5	17	36	26.8	130	37	ABML 400-16
500	41	29	93	7.5	17	36	28	166	36	ABML 500-16
630	47	32.5	94	9	17	45	34	180	45	ABML 630-16

B

B

C

C

D

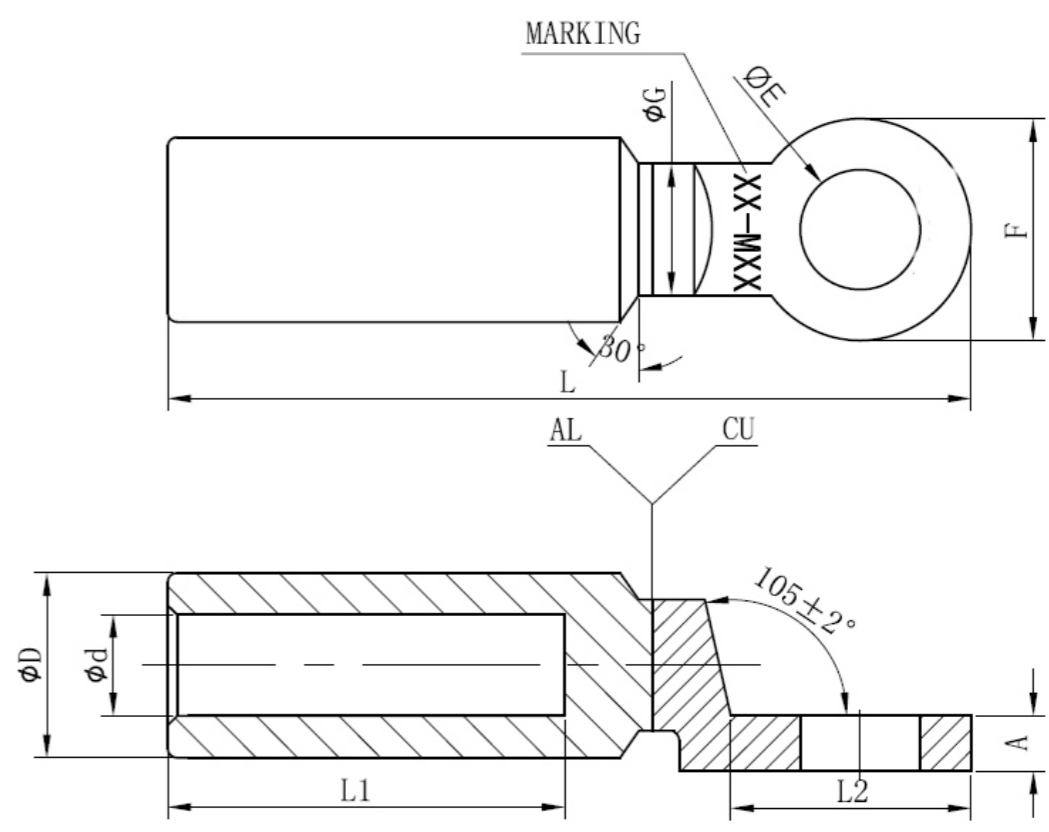
D

E


E

F

F



Notes:  
 All dimensions are in mm  
 Material: Al & Cu ≥ 99.9%  
 Lugs shall have marking as per respective size  
 At barrel is fitted by neutral grease and covered by cap

Title: ABML BIMETALLIC CABLE LUGS	SHEET 1/1	SCALE Not to Scale
Drawing No: ABML/01/19	 <b>A-1 ELECTRICALS</b>	
DRAWN 01/01/2019		
CHECK		
APPR. NJG		
ISSUED		
REV		
CUSTOMER		

1 2 3 4 5 6 7 8